



## ***Contents***

<b><i>About Us</i></b>	<b><i>2</i></b>
<b><i>Engineering Services</i></b>	<b><i>3</i></b>
<b><i>Design</i></b>	<b><i>4</i></b>
<b><i>Welding Inspection and Engineering Services</i></b>	<b><i>5</i></b>
<b><i>Rope Access NDT</i></b>	<b><i>6</i></b>
<b><i>Audit, QA&amp;QC Expediting Services</i></b>	<b><i>7</i></b>
<b><i>Supplier Audits</i></b>	<b><i>8</i></b>
<b><i>Owner Representation</i></b>	<b><i>9</i></b>
<b><i>PED&amp;TPED Inspection (According to European Regulations)</i></b>	<b><i>10</i></b>
<b><i>Shut down and Fitness For Service Inspection</i></b>	<b><i>11-12</i></b>
<b><i>Other Services</i></b>	<b><i>13</i></b>
<b><i>Extent of Projects</i></b>	<b><i>14-16</i></b>
<b><i>Our Clients</i></b>	<b><i>17</i></b>



## ***About Us***

**IDC Plant Technology Sdn Bhd** is an established independent company that provides inspection services to operators and manufacturers of all types of engineering plants, technical installations and facilities.

We supply independent third party expertise and support to ensure that technical systems, processes and products operate in a reliable, safe and economical manner and that all required quality standards are met. Our experts from all corners of the industry provides consultancy during planning, followed by safety and quality assurance during construction, manufacturing and commissioning. Our workforce are also capable inspectors that are certified to carry out In-Service Inspections in both On-shore and Off-shore facilities.

The experts and engineers of **IDC Plant Technology Sdn Bhd** have been involved in various projects in Malaysia and S.E.A. for the past decade. Our Malaysian office was incorporated as a regional center in S.E.A. to oversee and co-ordinate all business activities related to industrial services. Our competence covers the entire scope of technology, the rules and modern business management.

***Gaining the trust of our clients and fulfilling their expectations is our foremost objective.***

**Your Progress**

**Our Concern**

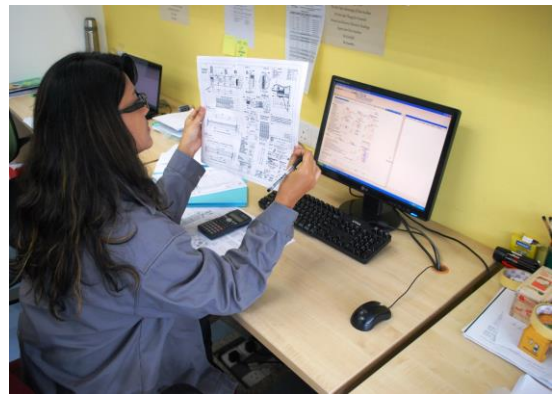
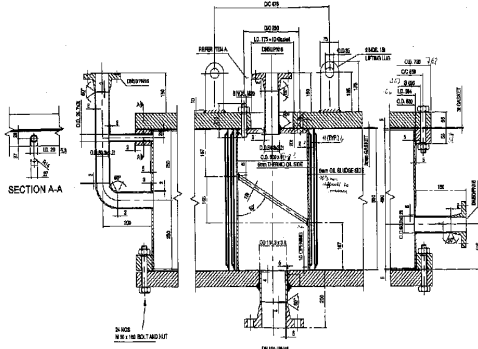


## ***Engineering Services***

- ⇒ Inspection and Consultancy Services related to German, European, American and Australian Standards (AD-2000 Merkblätter, PED, TPED, ASME, AS) and Singaporean requirements
- ⇒ Condition Assessment of pressure and rotating equipment (Pressure vessel, Heat Exchanger, Boiler, Compressors and Turbines)
- ⇒ Shut down Inspection services (On– and Offshore)
- ⇒ Trainer services for technical courses( API, ASME, PED...)
- ⇒ Planning, Layout and Design Support and Review
- ⇒ Welding Engineering and Welding Co-ordinator in accordance with IIW (International Institute of Welding)
- ⇒ Fitness for Service, Condition Analysis and Life Assessment during plant rehabilitation
- ⇒ Condition Assessment of lifting equipment
- ⇒ Failure Analysis and Investigation
- ⇒ Field Acceptance and Performance Tests
- ⇒ Supply of Inspectors and NDT technicians including Rope Access NDT



## Design



Planning, layout and  
design support and review





## Welding Inspection and Engineering Services

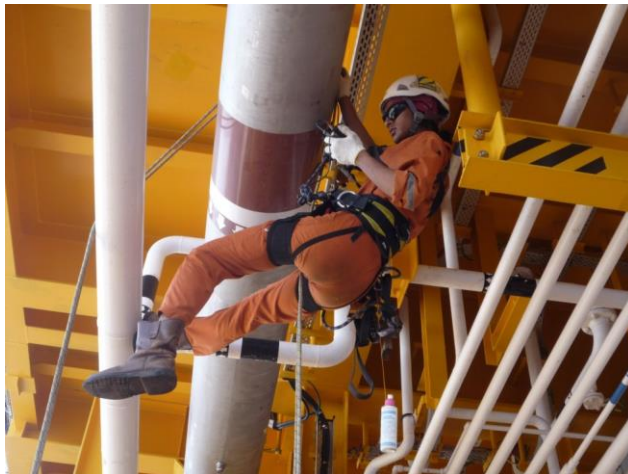


Welding Coordination  
In accordance to European and ISO standards.

Welding engineering services



## Rope Access NDT



Base Line Inspection in On- and Offshore  
Facilities



## ***Audit ,QA/QC & Expediting Services***

- ⇒ Production and Product Supplier Audits
- ⇒ Owner Representation during fabrication / erection of engineering structures (QC and Expediting)
- ⇒ Consultancy in Material and Welding Technology (Steel & Plastics)
- ⇒ Production Optimization Services
- ⇒ Pre-shipment Inspection
- ⇒ Statutory approvals and permitting services
- ⇒ Audit on Welding quality management in accordance with ISO 3834







## Supplier Audit Services



## Production and Product Supplier Audits







## Owner Representation



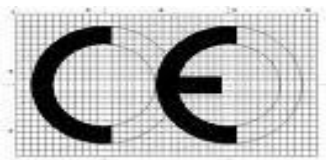
Owner Representation during fabrication of engineering structures (QC and Expediting)

Pre-shipment Inspection

Consultancy in Material and Welding Technology (Steel & Plastics)



## PED and TPED Inspection ( According to European Regulations )







## Shutdown and Fitness for Service Inspection







## Shutdown and Fitness for Service Inspection



**Fitness for Service, Condition Analysis and Live Assessment during plant rehabilitation in On- and Offshore Facilities**



## Other Services

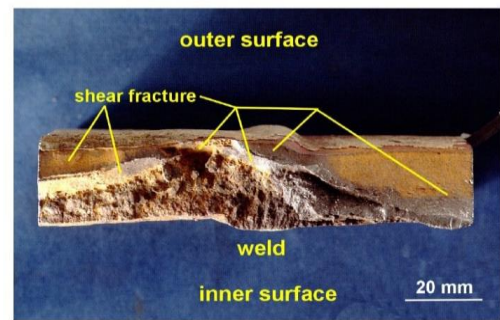


Image 3: specimen B 1.a  
Corroded Fracture surface (position, compare Image 1)

## Failure Investigation

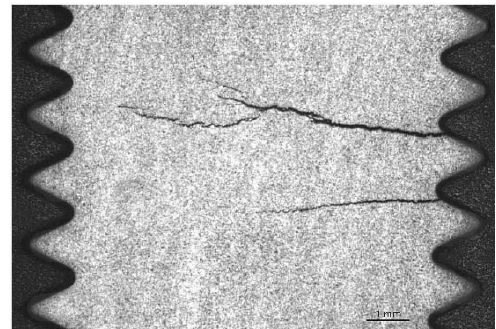


Image 2: screw 2  
Etched cross section of the thread section in image 1 with incipient cracks







## ***Extent of Projects***

API-510 Pressure Vessel In-service Inspection & API-570 and Piping Inspection for **PETRONAS Carigali (Myanmar)** on the Yetagon Platform



Rope Assess combined with ED and MT inspections on off-shore platform in Myanmar, also rope assess Painting Inspector (TEPM Offshore, Yadana Field (MCP platform)) for TOTAL E&P Myanmar.



Shutdown Inspection of Pressure Equipments for Saint Joseph Facility (off-shore) of **Sabah Shell Petroleum Co.**







## ***Extent of Projects***

Supplier Audits for **SMS Demag, Germany** (in AMC Subang & Gebeng, Besteel Berhad, Peer Mark Engineering Sdn. Bhd.) and for **Brunei LNG** (in Ikatan, Ipoh – PV Manufacturer, Nusatek – NDT, Sun Lien Fatt Flanging & Rolling Sdn. Bhd. – Head forming)



Owner Representative (Expediting and Quality Control) - Manufacturing of Reactors with Process Gas Duct Units, Steam & Methanol Drums in Malaysia acc. to ASME I and VIII to Ningxia MTP Plant, China for **Lurgi GmbH, Germany**,



Inspection of Pressure Vessel (80 vessel) during Power Plant shut down in **Kapar Power Station**





## ***Extent of Projects***

PED Authorized Inspector's Services for Boiler equipment manufacturing for Alstom acc. to EN 12952 in Alstom, Surabaya, Indonesia (Project Grosskraftwerk Mannheim, Germany; Materials P91, P92, VM12 etc.) in behalf of **TÜV Süd Industrie Service GmbH, Germany** (Project owner Alstom Germany)



Industrie Service

**ALSTOM**

Owner Representative (Quality Control) - Manufacturing of Pressure vessel in Malaysia acc. to ASME VIII to **SASOL, South Africa**, under **TÜV Rheinland (South Africa)** in **KNM Exotic Materials Sdn. Bhd.**  
Project: HF Alkylation Phase II



**TÜVRheinland®**  
Genau. Richtig.

**sasol**  
reaching new frontiers





## Our Clients

